

No Preview
Available

Total No. of Question : [5]

Registration No. :

--	--	--	--	--	--	--	--	--	--

Programme Name : F.Y.B.Tech
Regular F.Y.B.Tech. Sem. II ESE (2022 - 23) July 2023
II SEMESTER (2022 BATCH)
221FYL113-Computer Aided Engineering Graphics

Duration : 2 Hours and 30 minutes.

Marks : 50

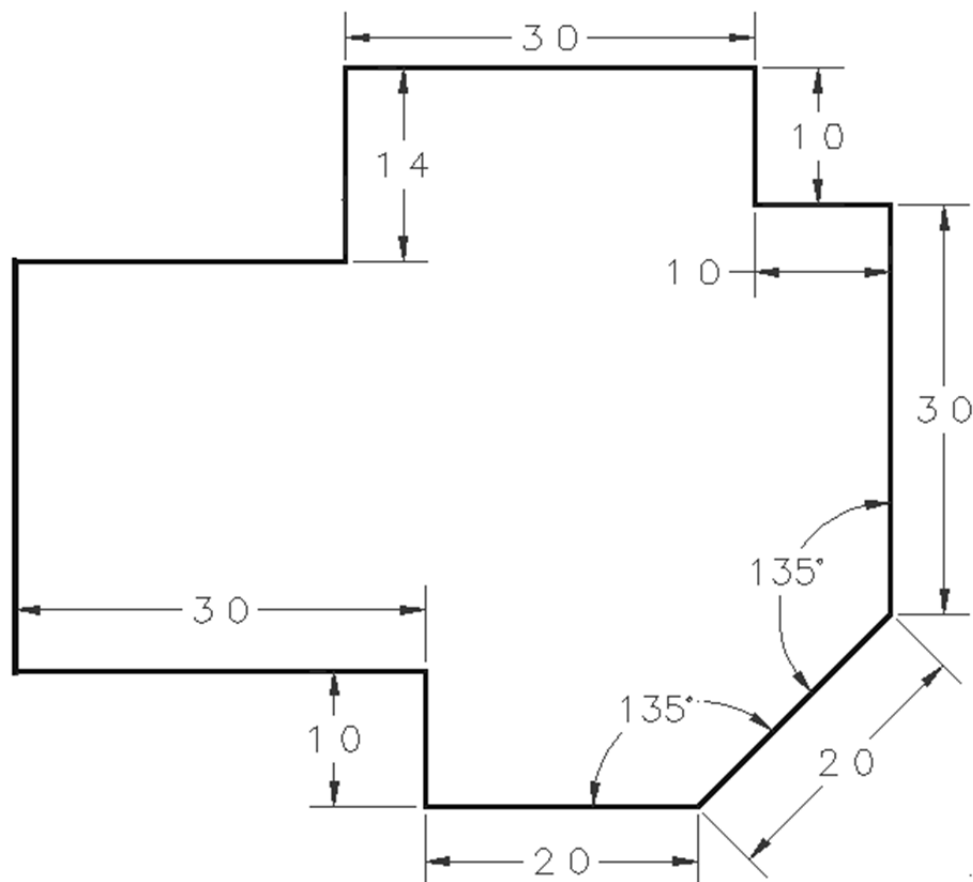
Instructions :

(Q1) Attempt the following

[8.0]

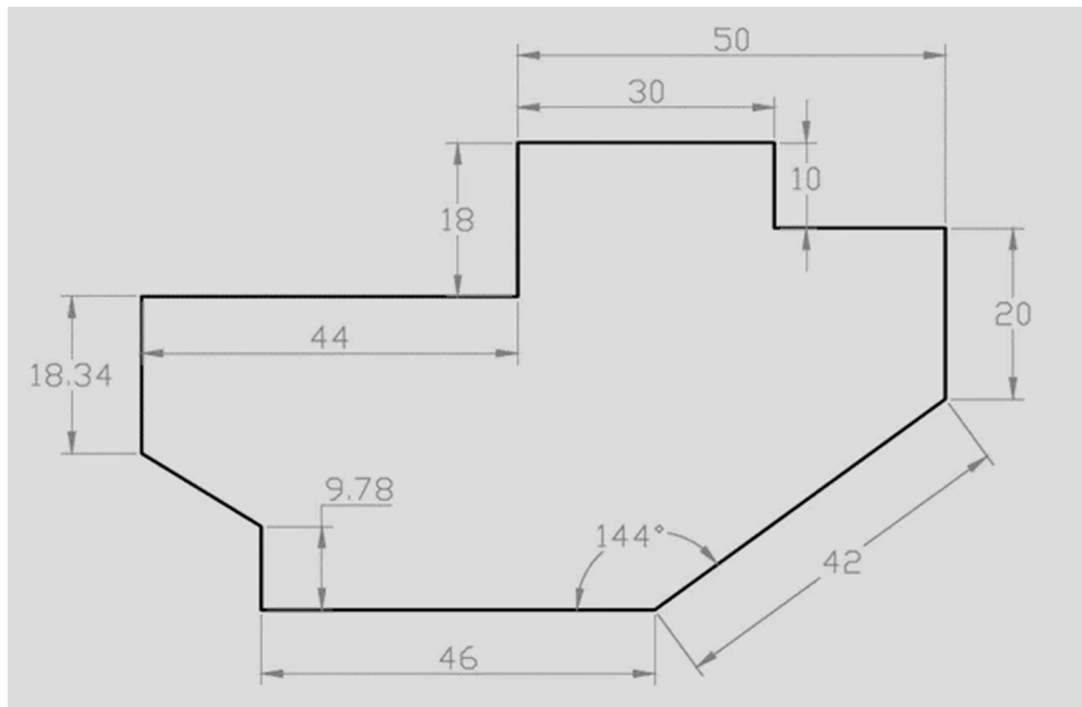
(1.a) Draw the following

[4.0]



(1.b) Draw the following

[4.0]

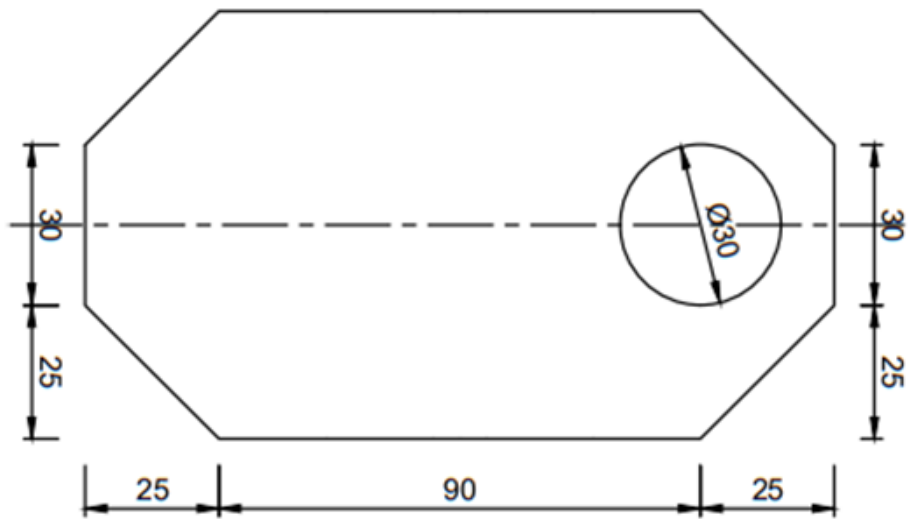


(Q2) Attempt any One

[6.0]

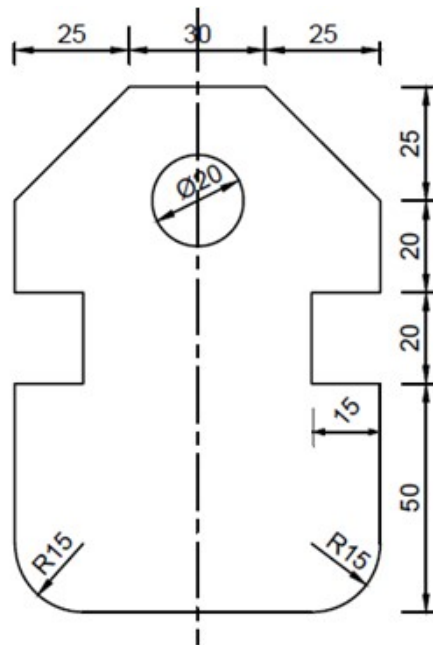
(2.a) Draw the following

[6.0]



(2.b) Draw the following

[6.0]



(Q3) Attempt the Following

[6.0]

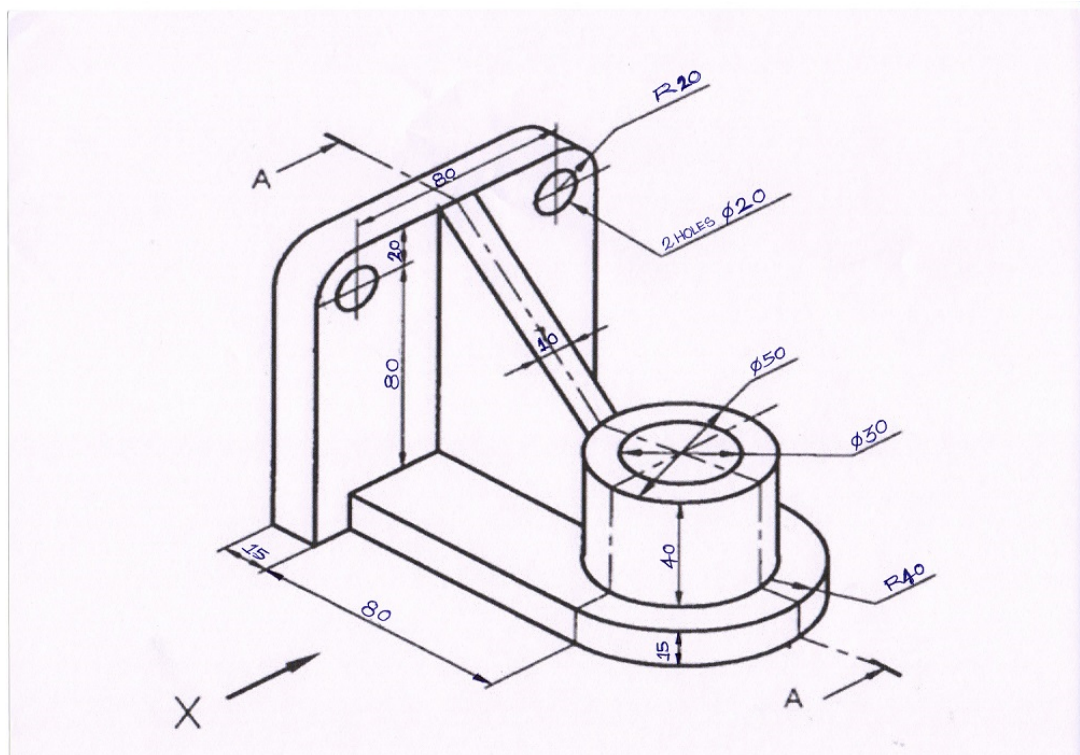
(3.a) Draw a projection of a cone with 60 mm base circle diameter and height 80 mm resting on HP such that its base makes 60° to HP and axis is parallel to VP. Complete its projections.

(Q4) Attempt the Following

[14.0]

(4.a) Draw **Sectional Front View** of following object along X-direction & **Side View** with dimensions

[14.0]

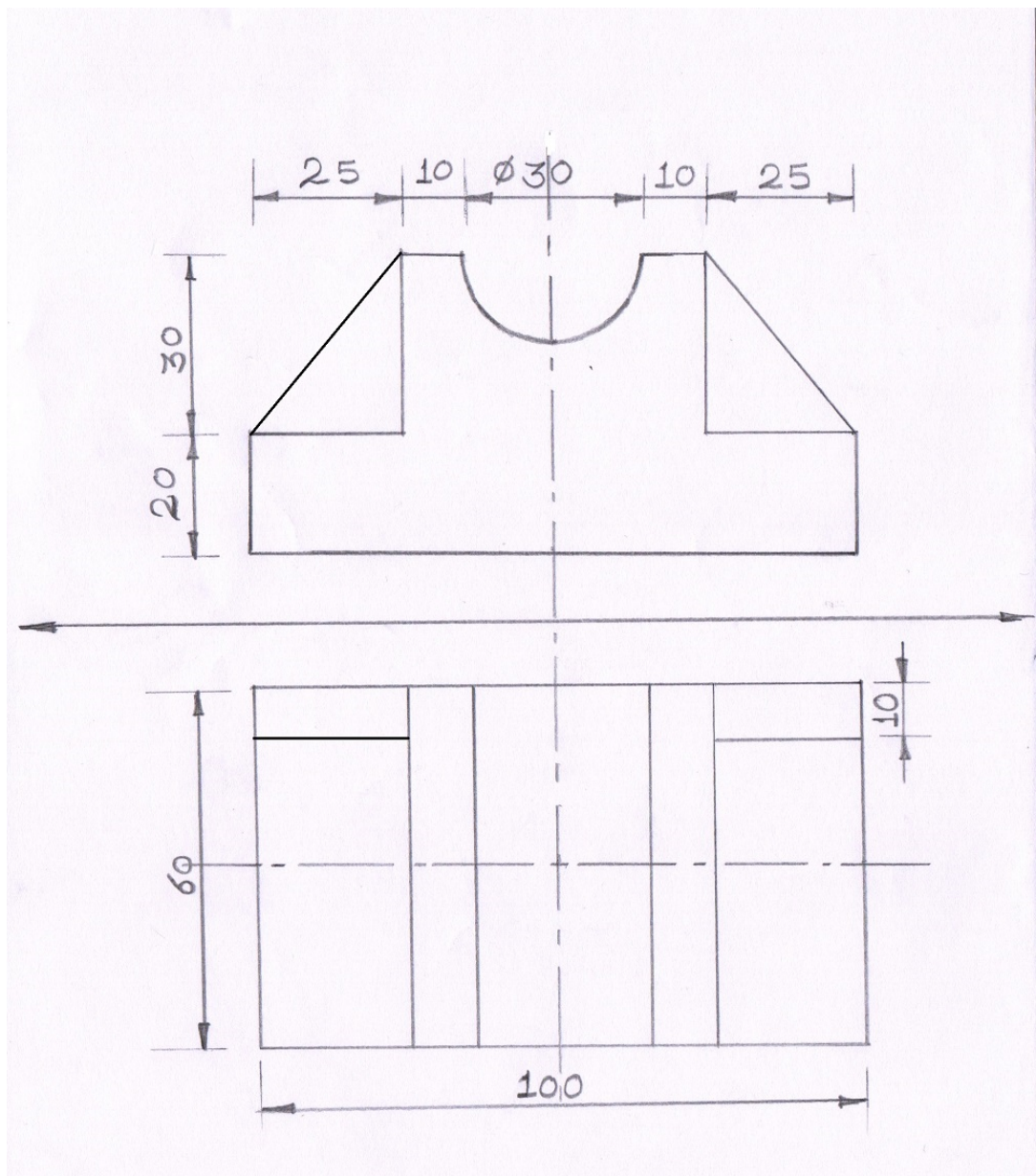


(Q5) Attempt any Two

[16.0]

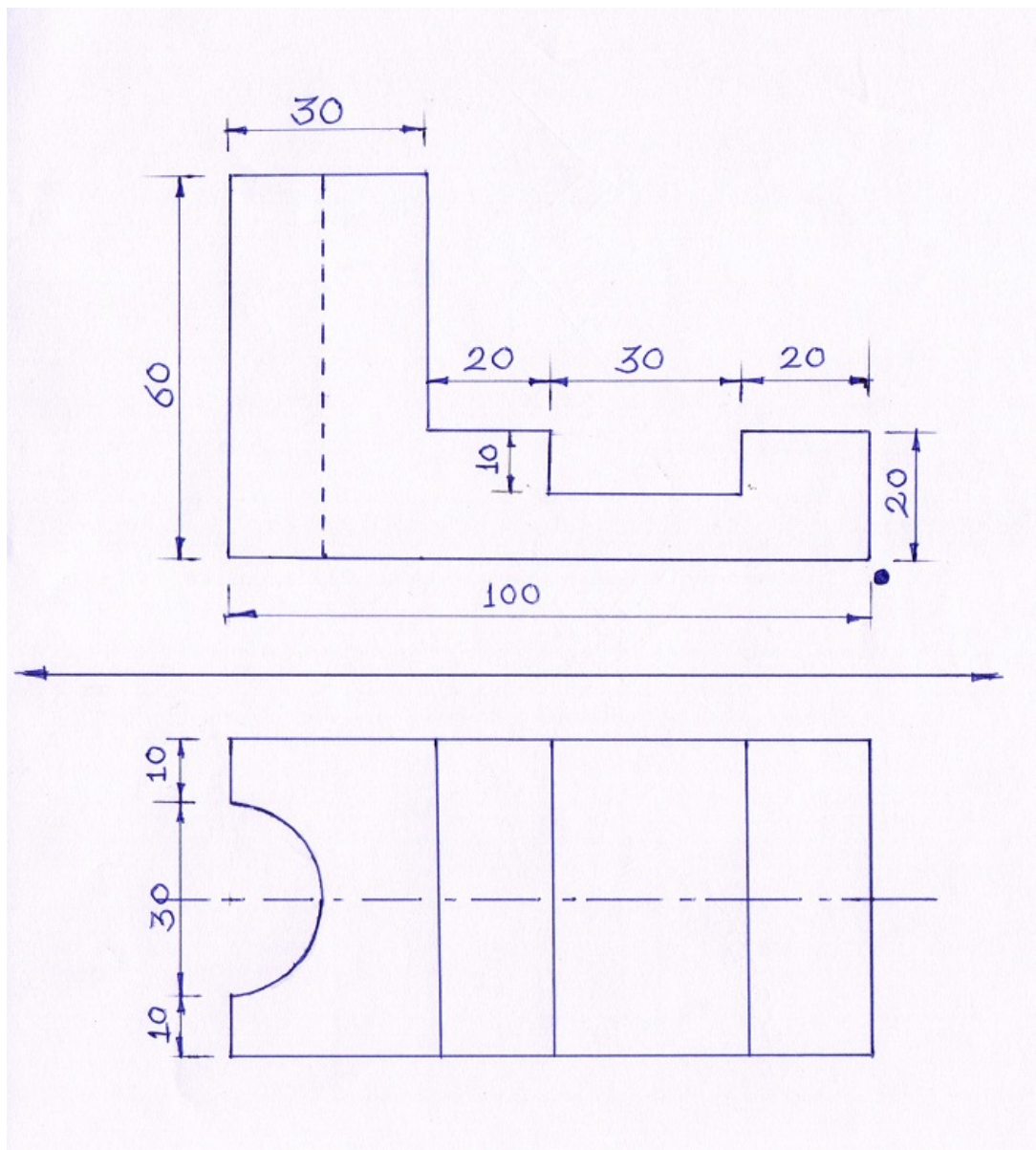
(5.a) Draw isometric view of following

[8.0]



(5.b) Draw isometric view of following

[8.0]



(5.c) Draw isometric view of following

[8.0]

